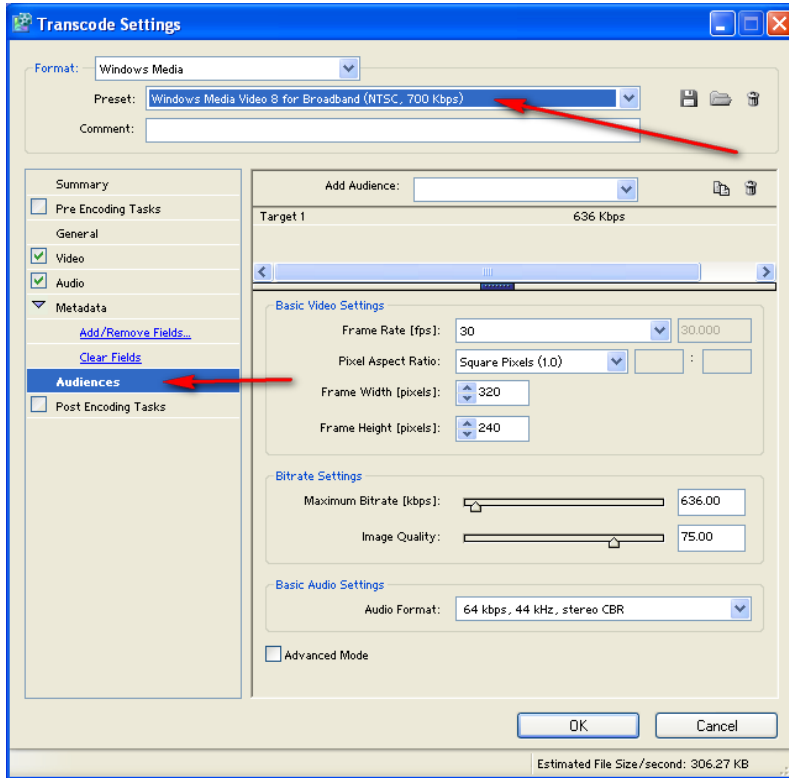


Basic Exporting for Premiere—for Upload

Step 1: Save!

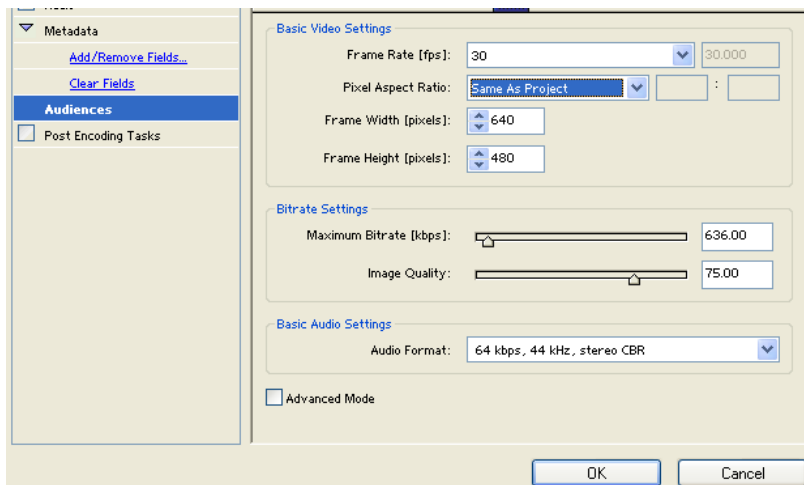
Step 2: Click File> Export> Adobe Media Encoder

Step 3: Choose the preset for Windows Media Video 8 for Broadband (NTSC, 700 Kbps)



Step 4: Click Audiences at left

Step 5: Set Pixel Aspect Ratio to Same As Project

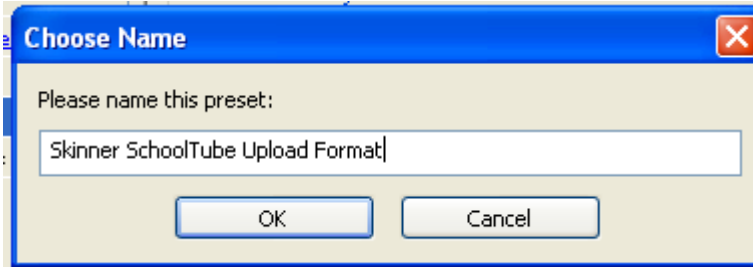


Step 6: Set Frame Width/Height to

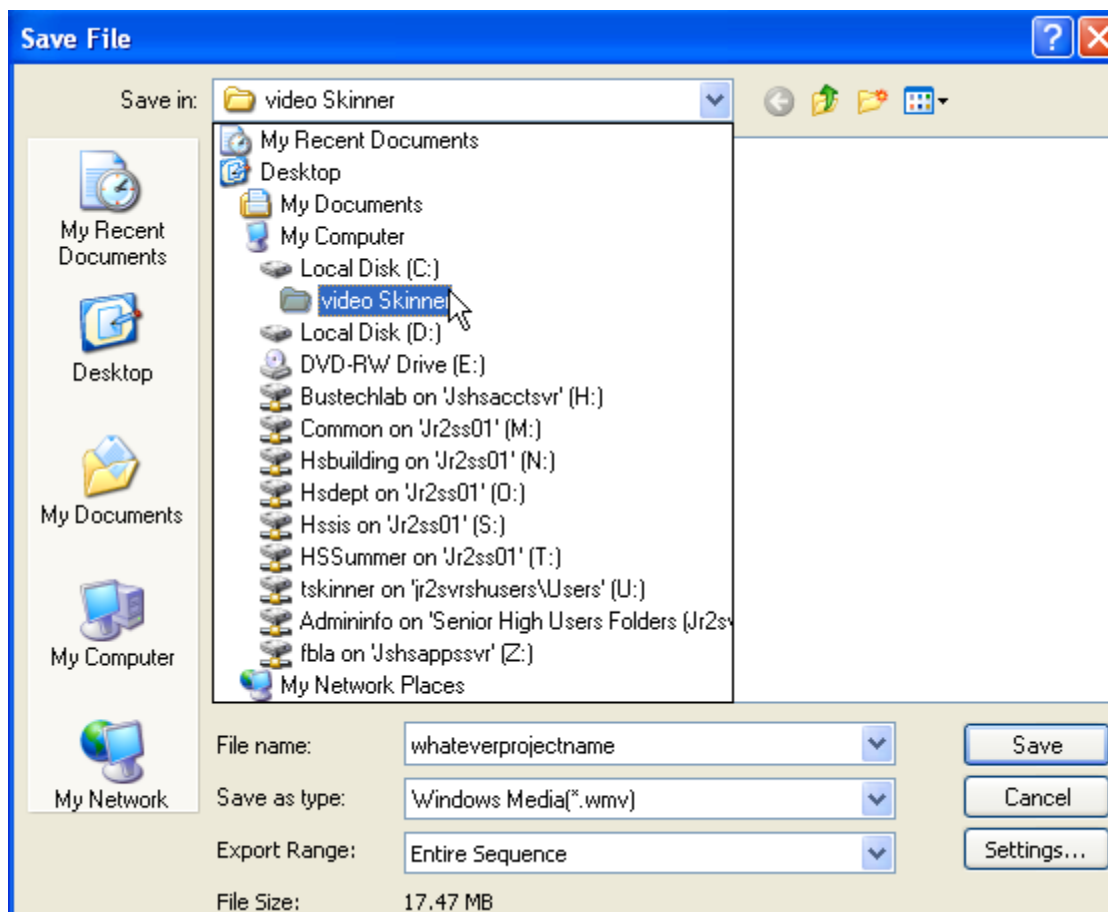
640 x 480

Step 7: Press OK

Step 8: So you don't have to do this on the computer you are currently on again, name the Preset with your name and SchoolTube Upload Format.

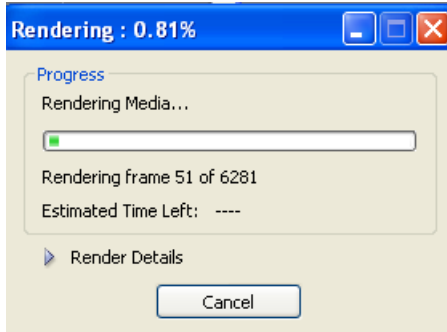


Step 9: Set save location—DO NOT SAVE FINISHED VIDEOS TO U DRIVE!! SAVE TO THE C DRIVE. MAKE A VIDEO FOLDER OR A FINISHED VIDEO FOLDER AND PUT IT THERE! (Also, any video you capture should be put on the C drive also; do not save videos to the U drive as there is not sufficient space for everyone and the network will lag)



Step 10: Give it a filename and be sure it's saving in Windows Media (WMV) format. Click SAVE.

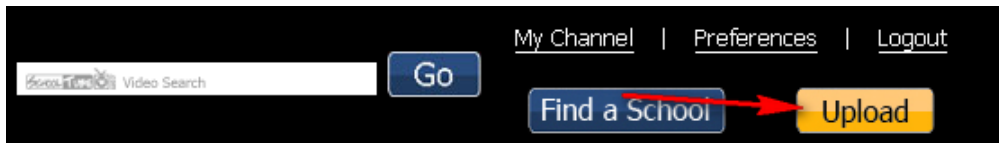
Step 11: It will begin rendering. This takes awhile. While rendering is happening, you should start working on storyboarding your next project (or read a book).



(For a 3-4 minute video, rendering may take up to 10 minutes depending on how many track lines, effects, etc., that you have so plan accordingly—be sure you have that many minutes left of class before you do it; I strongly suggest you export in the first half of class and be sure you have something to do while it is exporting)

Step 12: Watch it; be sure it looks okay (in Windows Media Player; double click it in your folder)

Step 13: Upload to Schooltube—Log in and press the Upload button



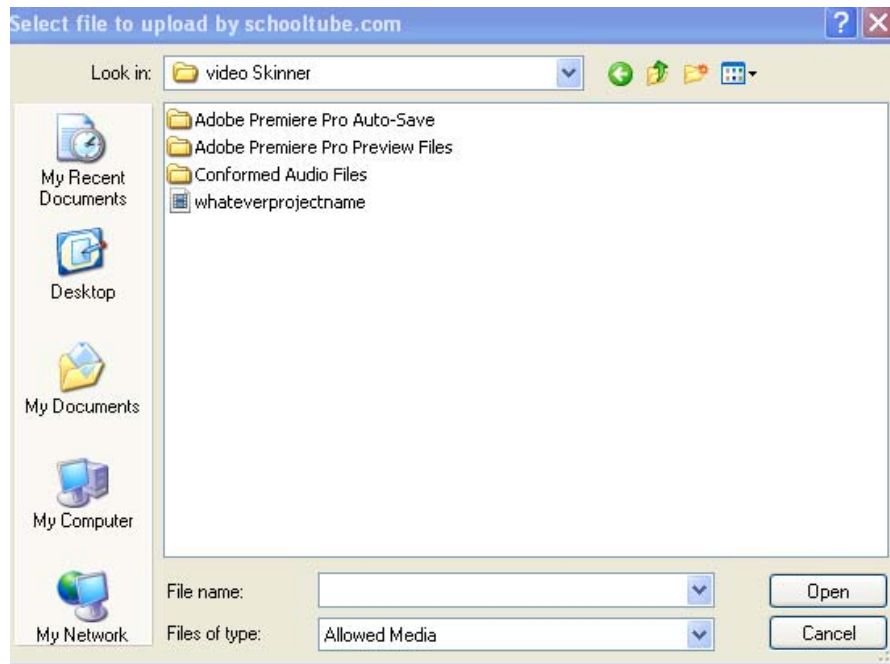
Step 14: Fill out the information about the project—Be sure to give it the project name. Do not include your name, but do put your initials in the Description box at the end.

Upload a File

[Having trouble? Click here to use the classic uploader.](#)

Accepted file types: .3gp .3gpp .asf .avi .divx .m4v .mov .mp4 .mpeg .mpg .rm .wmv .xvid
Max File Size: 1GB (1024MB)

Step 15: Select File and Begin Upload



Step 16: NOTE that when it finishes, it will send me an email to moderate. It will not go live until I look at it and approve it.

BIG NOTE:

Once you've done this once, when you get ready to export the next file, just choose the preset you made! It will make things much easier. THANKS!