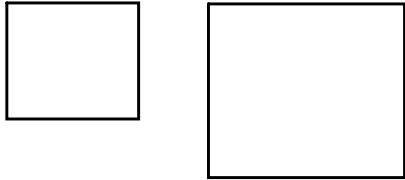
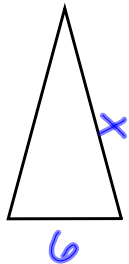


# Proportions + Similar figures



Similar figures are figures that have the same shape and their corresponding sides are in proportion.



6 corresponds to 3 and x corresponds to 5

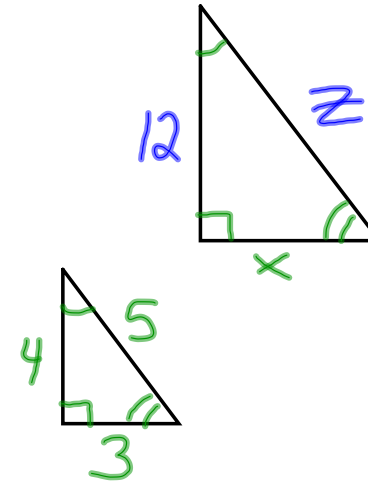
$$\frac{6}{3} = \frac{x}{5}$$
~~$$\frac{6}{3} = \frac{x}{5}$$~~

$$\frac{30}{3} = \frac{3x}{3}$$

$$10 = x$$

-reminder:  
in proportions,  
cross products  
are =

Oct 19-1:27 PM



~~$$\frac{4}{12} = \frac{3}{x}$$~~

$$4x = 36$$

$$x = 9$$

~~$$\frac{4}{12} = \frac{5}{z}$$~~

$$4z = 60$$

$$z = 15$$

Oct 19-1:37 PM